



Welcome to **Givat Shmuel**

Everything you need to know!

JLIC Givat Shmuel / BIU
2024-2025

WELCOME!

We are thrilled to have you in our vibrant community in Givat Shmuel. This welcome packet is designed to help you with all the essential information you need to settle in and make the most of your new home.

Whether you're a student, lone soldier/Bat Sherut, or young professional, we've got you covered!

We wish you good luck and hope this packet will help you feel right at home!



WHAT IS JLIC?

JLIC's mission is to create a movement of vibrant Jewish life among emerging adults aged 18 to 30 through transformative leadership development, innovative educational programming, and meaningful engagement opportunities. We empower the next generation of leaders who will inspire and strengthen the Jewish community worldwide.

In Givat Shmuel, we are grateful to have the partnership of both the Orthodox Union and **Mizrachi**. Mizrachi is the global Religious Zionist movement, spreading Torat Eretz Yisrael across the world and strengthening the bond between the international Jewish community and the State of Israel. Mizrachi inspires people with a sense of commitment to the Torah, the Jewish people and the Land of Israel.

JLIC Mizrachi Givat Shmuel is a vibrant and rapidly growing community of hundreds of young Jews making their lives in Israel, including students at Bar Ilan University, young professionals, and olim chadashim from around the world.

WHAT WE OFFER

Community

JLIC Mizrachi offers a vibrant, active community where people from diverse backgrounds—whether attending university, making aliyah, or building lives in Israel—can connect and share experiences.

Under the leadership of JLIC couples and a dynamic board, we provide daily programming, including minyanim, shiurim, social events, and a lively Shabbat atmosphere, both on and off campus. For hundreds, this community is central to building a home in Israel.



Shabbat

Shabbat in Givat Shmuel is the highlight of the week! On Friday night there is a JLIC Mizrahi minyan at HaZeitim Street 80 (in the gym of Moreshet Neria school). Shabbat morning tefillah is followed by a weekly kiddush and shiur. Our JLIC couples regularly host in their homes, as well as community members in their apartments across Givat Shmuel. There are also communal Shabbatons throughout the year. The Community Support Committee is always there to make sure nobody is left without a meal. During the longer shabbatot of the year, Shabbat often ends off with a potluck Seudah Shlishit and a musical Havdalah.



Torah Learning

Our weekly learning program is vibrant and varied. The JLIC staff are around for chevrotot and they and community members teach regularly. JLIC has partnered with Bar Ilan University in opening an English Beit Midrash Program in which a variety of classes are taught in English and students are eligible to take these classes for Judaics credits. These classes can be taken at the women's Midrasha or men's Yeshiva building. Sunday night there is an English speakers shiur with guest speakers and pizza, Monday the men's Semicha program meets, Tuesday is Torah Tuesdays with dinner, and Wednesday is the Womens' Chabura.

Social and Volunteer Opportunities

Weekly social events cater to the rapidly growing family we have here in Givat Shmuel. Some events are open to all and some are more intimate for people who are more comfortable in a smaller setting.

Our community encourages and facilitates volunteer opportunities outside of our community. We have built ways to support within our community as well, including a chicken soup freezer for people are sick, helping set up and run meal trains when needed, and generally being there for each other!



MEET THE LEADERSHIP!

Yaffy & Rav Nadav Newman

Directors, JLIC Mizrahi Givat Shmuel / BIU

Yaffy: 058-795-9974 | **Rav Nadav:** 055-663-9010

Yaffy & Rav Nadav are from Hollywood, FL and Maale Adumin Israel, respectively. They joined the JLIC Mizrahi GS family mid-war as the Assistant Directors and are now the Directors of the program. Nadav, in addition to being in miluim, is studying for semicha and a degree in Computer Science. Yaffy is focused on managing all aspects of our community full time, along with Pe'er their son - also known as the community mascot. They are wildly passionate about community-building and connecting Jews of all walks of life to each other and wouldn't have it any other way.



Rav Tzvi Wohlgelernter

Senior Rabbi | 054-954-8839

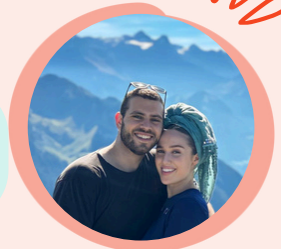
Originally from Toronto, Canada, **Rav Tzvi** spent 3 years serving as the JLIC Rabbi at Rutgers University with his wife Tali before returning to Israel with their four daughters. They were then directors of JLIC Mizrahi in Givat Shmuel and Bar Ilan for 4 years. Rav Tzvi now runs all Torah programming and minyan-related activities. Teaching and learning Torah with young olim who live in Givat Shmuel or study in Bar Ilan feels like a continuation of the values instilled in him from a young age.



Keren & Uriel Tahover

Av and Em Bayit at Bar Ilan University

Keren: 058-400-1903 | **Uriel:** 058-732-7535



Keren & Uriel are the JLIC Mizrahi student couple at Bar Ilan University. Uriel, from Efrat with time spent in Canada, studies law and social work. Keren, with roots in New York, Israel, and France, pursues a degree in business and HR. The couple lives on campus with their son Noam, where they serve as community leaders and welcome other students into their home.

MEET THE LEADERSHIP!



Estie Wasserstein
Co-President



Hanan Berger
Co-President



Aviva Lakser
Head of
Community Support



Eliyahu Freudenstein
Head of
Community Support



Kalanit Greenfield
Head of Events



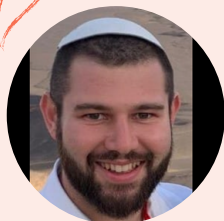
Hannah Altman
Head of Events
& Social Media



Seela Berger
Head of Torah



Eliana Lebowitz
Head of Social
Media



Aharon Altman
Head Gabbai



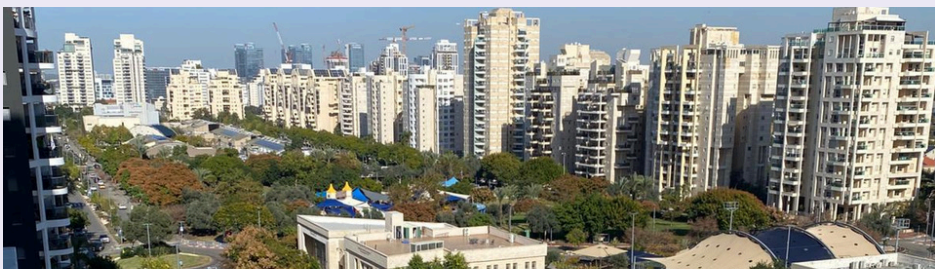
Moshe Schlusel
Head Gabbai

ABOUT GIVAT SHMUEL

Givat Shmuel, once a sleepy agricultural area, has transformed into a lively, urban hotspot for students and young professionals, especially in the last few decades. Originally named after Samuel Pineles, a Romanian Zionist leader, Givat Shmuel was founded in the 1940s as a small moshava (agricultural settlement). Today, it's a bustling city just outside of Tel Aviv, known for its tight-knit community, strong Jewish character, and growing popularity among young adults. Givat Shmuel has quickly earned its reputation as a place to work hard, study hard, and have a great time!



The vast majority of the Mizrachi JLIC community lives on the “Old side” of Givat Shmuel, on Ben Gurion, HaNasi and Yoni Netanyahu streets. Students who choose to live on campus generally live in the Park 100 dorms. This dorm is the closest of all BIU dorms to Shabbat community life.



Neighborhood Map

On the opposite page you will find a map of relevant sections of Givat Shmuel with the important locations already marked. You can also pick up a printed version from JLIC Mizrachi and use it on Shabbat until you start getting to know the area better.

Get to know us!!



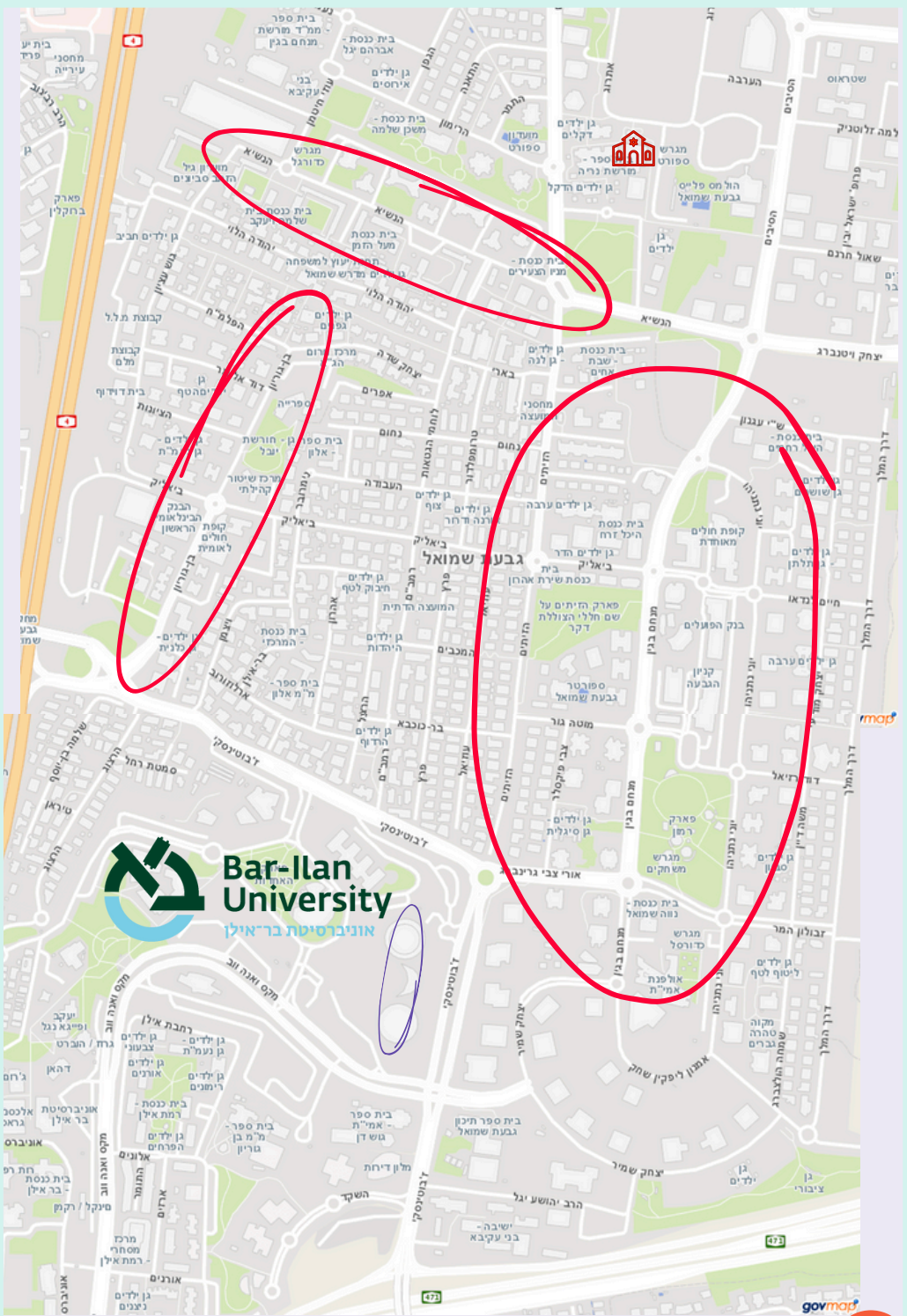
JLIC Mizrachi shul

Most common areas to live **off** campus

Most common area to live **on** campus



*Givat Shmuel is a compact, walkable city, so while the circled areas are popular within the community, many live elsewhere. Everything is usually a short distance away— reach out if you have questions about a location before moving here!



Bar-Ilan
אוניברסיטת בר אילן

אוניברסיטת בר אילן

FINDING A PLACE TO LIVE

➔ Dorms

Bar Ilan students have the opportunity to live in either the Ilanot or Park 100 dorms on campus. The Park 100 (new) dorms are right by Givat Shmuel. More info here.



➔ Apartments

If you're not an BIU student, or not looking to live in a dorm, you can either search for an "existing" apartment that already has roommates or you can create a "new" apartment with others also looking for roommates. Similarly, if you're coming with your forever "roommate" heres where to start:

Where do I look for apartments if I'm trying to create a "new" one?

- The website yad2.co.il is useful for finding apartments to rent (just be aware that the site is in Hebrew).
- Facebook groups where all landlords and brokers regularly post apartments, including: דירות להשכרה גבעת שמואל /Givat Shmuel Apartments, Camp Givat Shmuel / Bar Ilan, דירות מפה לאוזן בגבעת שמואל.
- WhatsApp group for apartment hunting:

◦ English:



Hebrew:



When should I start looking for an apartment/roommates?

For people looking to move into Givat Shmuel in the summer, it is recommended to start looking after Pesach. That's usually when existing apartments begin searching for a new roommate to fill an empty room and landlords start looking for new tenants.

Where can I find roommates?

You can ask someone you know who already lives in Givat Shmuel (odds are they know somebody). You can search on the dedicated Facebook and WhatsApp groups for finding Shomer-Shabbat and Shomer-Kashrut apartments and roommates in the area.



FINDING A PLACE TO LIVE

Other things to keep in mind:

- Whether there is an elevator in the building, and which floor the apartment is located on
- Whether or not the apartment or your room comes furnished. It's not the worst thing to acquire furniture, but it could be time consuming, and may not be worth your money if you don't intend to stay for a long time.
- The apartment's location. Consider the distance from BIU Campus (if you're a student), shul, public transportation or other amenities that are important to your needs, like grocery stores or gyms.
- The apartment's size. If you're passionate about hosting making sure your apartment is a size to accommodate that so friends can come over and hang out.
- Storage: If you're coming with a lot of luggage, you might want to ask about storage space. Some apartments come with storage units in the building.
- Whether or not there is an AC unit in the room you'll be taking (summers in Givat Shmuel can get quite hot)!

➔ Home Goods

- **Shefa Stock** - on the second floor of Rogovin on Menachem Begin. Very similar to brand name stock stores like Max Stock, has good cheap kitchen utensils/tools, bathroom supplies etc. as well as kids art supplies.
- **Ben Gurion Stock Store** - Next to the Machsani HaShuk on Ben Gurion. Another stock store on the old side, also has a great toy selection, office supplies like binders, cute home decorations like fake plants.
- **Fox Home** - some higher end products, including bedding and towels. On Mota Gur street off Menachem Begin.
- **Israel Express** - a locally owned olim business that has appliances, American products and home electronics like shabbat lamps!
<https://www.israelxpress.com/>
- **IKEA** - always a reliable option and if you are only going for small items the 640 bus to Netanya goes straight to the IKEA in there.
- Always be sure to be checking Yad2, local Swap/Sell Whatsapp groups and Facebook Marketplace.



FACILITIES AND AMENITIES

Shopping Centers

Givat Shmuel has three main shopping centers offering a variety of stores, services, and places to relax:

- **קניון עופר הגבעה** - The city's main mall, featuring fashion chains, restaurants, cafes, a supermarket, banks, clinics, and other services.
- **מרכז מסחרי רגובין** - A convenient commercial center with local shops, restaurants, and a small supermarket, located in the heart of the city.
- **קניון עמי בוטיק סנטר** - A boutique-style center with unique shops, salons, and cozy dining spots.
- Givat Shmuel is also one bus away from various malls and shopping centers in Petach Tikva and Kiryat Ono: **קניון עופר הגדול פתח תקוה, יכין סנטר, עמי בס"ר סיטי, קניון קריית אונו**

Gyms

- **Holmes Place** - Ha-Zeitim St 92
- **בית הפילאטיס** - HaNasi St 73
- **Sporter - Givat Shmuel** - Mota Gur St 9
- **New Age Studio - Pilates Center** - 512 ז'יבוטינסקי, Giv'at Shmuel, 5405220

Printing

- **Richies** - at Bialik St 1-7
- **La Student** - at Oranim St 1. Email the document(s) that you want printed to lastudent25@gmail.com, and include if you want it double sided or not, black and white or color, and if you want it bound (if its a big document).
- On campus there are also a few options!

Pharmacies

- **Superpharm** - Menachem Begin 23 (Rogovin Mall)
- **Pharmacy Givat Shmuel** - David Ben Gurion 11
- **Meuchedet** - HaNasi St 73
- **Clalit** - Menachem Begin 38 (Rogovin Mall)
- **Pharmacy Ramat Ilan** - HaArazim 5
- **BePharm** - Yoni Netanyahu 27 (Ofar HaGiva)



Mikvas

- **Women** - Nimrover 2, Holtzberg 3, Shay Agnon 4
- **Men** - Holtzberg 3
- **Kelim** - Nimrover 2, Holtzberg 3

SERVICES

➔ Banking

Local banks:

- Mizrahi - Menachem Begin 29-31 (Ofar HaGiva)
- Mizrahi on campus - Building 411

Local ATMs:

- Leumi - Yoni Netanyahu 29 (Ofar HaGiva)
- Discount - Yoni Netanyahu 23 (Ofar HaGiva)
- HaPoalim - Yoni Netanyahu 38 (Ofar HaGiva)
- 24/6 Makolet - Jabotinsky 514 (bottom of building B of Park 100 on the outside of campus)
- Condomarket - Jabotinsky 50 (across the street from building B of Park 100)



➔ Insurance & Healthcare

Givat Shmuel offers a variety of healthcare options to meet your needs, regardless of whether you are insured with Maccabi, Clalit, or Meuhedet. Maccabi operates two clinics in the area: one located in the Rogovin Mall at Begin 38 and another at Ben Gurion 11. Clalit also has two clinics, with one situated on Be'eri Street 10 and another conveniently located in the Rogovin Mall, where you'll also find a Clalit pharmacy. Meuhedet provides services at its clinic on HaNasi Street 73.

➔ Public Transportation

Givat Shmuel is well-connected by public transportation, making it easy to travel within the city and to nearby areas. Several bus lines run through the city, providing convenient access to major destinations like Tel Aviv, Bnei Brak, and Petach Tikva. The city is also conveniently located near the Bnei Brak and Petach Tikva light rail stations, providing fast and efficient access to central locations in the region. For intercity travel, מחלף גבעת שמואל (Givat Shmuel Interchange) serves as a key hub for buses traveling to cities across the country, making it simple to reach destinations nationwide.

We encourage you to download the Moovit app for real-time information on public transit!



Scan here to
download
Moovit!

BUYING GROCERIES

Supermarkets

- **Haviv** - Expensive. Good selection, but not the place to save money. Helpful in a pinch. At the mall - Yoni Netanyahu 21
- **Super Barket** (old side) - Decently priced. Smaller than the branch on the other side of the city. David Ben Gurion 11
- **Machsanei HaShuk** - Sometimes has good sales. David Ben Gurion 18
- **Carrefour** - Near the bottom of campus, European products. Oranim 1
- **Super Barket** (new side) - Decently priced. Larger one of the two. HaZeitim 96
- **Rami Levy** - Cheapest, solid selection, just one bus ride away. HaSivim 37 (Petach Tikva)
- **Shuk Halr** - Cheap, Bnei Brak, right by the bridge. Rav Kahaneman 106 (Bnei Brak)

Makolets

- **Market Express 24/6** - Pricy but convenient. At the new dorms building. Jabotinsky 514
- **Petrozilia/Makolet** - Nice produce as well as other stuff. Pricy. Bialik 28
- **SuperCofix** - Menachem Begin 34 (Rogovin Mall)
- **MiniMarket** - Yehuda HaLevi 3; HaNasi 10; HaNasi 17
- **A&M** - Pricy, has some niche American products. HaSivim 48



Did You Know?

Our crucial community operations are made possible by donations from our broader community, in addition to the critical support we receive from the Orthodox Union and World Mizrachi.

To partner with us, visit:

bar-ilan.oujlic.org/donate/

BUYING GROCERIES

Butchers

- **Machsanei Hashuk** - Conveniently located within Machsanei Hashuk supermarket on Ben Gurion Street so you could shop for everything in one place. The butchers are really friendly and also have a Whatsapp chat for their weekly sales. Just mention to Yitzchak the butcher that you heard about it and he'll add you to it
- **Super Bareket** - Conveniently located within Super Bareket you could get everything you need and there is a small fish section as well. Make sure to check the sales sheet at the entrance to the store to see what's on sale.
- **Maadanei Gourmet** - Located in the Amy mall, is a convenient place to get meats of different varieties. They also have many ingredients and sauces that are great to try out for your next shabbat meal.
- **Haviv** - Located in the Haviv supermarket within the Hagiva mall (קניון הגבעה) and like the rest of Haviv, is a more expensive option, however it's always worth a look because they have a great selection that might not be available at other locations.
- **Atlis Givat Shmuel** - located on Bialik street, right next to the petrozilia vegetable store, it's very easy to get to and has a great selection of options to choose from. They also have a small selection of wines and also is a mail pick up location.
- **Shuk Ha'ir** - While not strictly located in Givat Shmuel, it is also a great option to pick up meat and fish, with a fresh fish counter on location. Shuk Ha'ir is a large supermarket located just over the bridge into Bnei Brak on Rav Kehanaman street.

Bakeries

- **Lee's Bakery** - offers a range of baked goods and coffee, but known more for their assorted American products. Operating Sunday through Friday.
- **Roladin Givat Shmuel** - located at Yoni Netanyahu 23 in Hagiv'a Mall, part of a popular chain known for its pastries, cakes, and breads.
- **Amit Bakery** - in the Amy Mall and has amazing challot for Shabbat!
- **TenJoy** - you can purchase GF baked goods as well as other items.
- In addition to these specific bakeries, most supermarkets have a bakery section. There are many more in the area, but these are the most popular!

RESTAURANTS & CAFES

On Campus

Elite Coffee - Dairy; buildings 213, 507, 604, 905, 1105

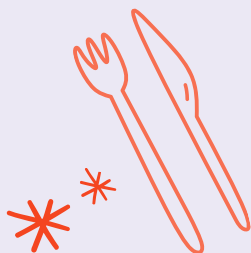
Karnaf - Dairy; building 206

Coffee time - Dairy; building 306 + adjacent to building 410

Bis Bis - Meat; building 1004

Mood - Meat; on the grass behind building 402

Rosemary - Pareve; building 409



Meat

Wingz - HaSivim St 49

Burgers Bar - Oranim St 1

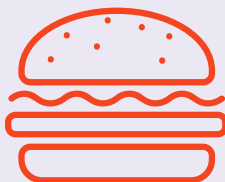
Shawarma Eliyahu - HaNasi St 17

Japan Japan - Mota Gur St 14
(Amy Mall)

Meatball - Yoni Netanyahu St 31
(Ofer HaGiv'ah Mall)

Zelda's (Cholent and Shabbos food) - HaNasi St 73

Ruben - Shacham St 36, Petah Tikva



Cafes/Dairy

Cafe Greg - Sderot Menachem Begin 30 (Amy Mall)

Cafe Cafe - Yoni Netanyahu St 25 (Ofar HaGiv'ah Mall)

Landwer Cafe - Sderot Menachem Begin 38 (Rogovin Mall)

Roladin - Yoni Netanyahu St 23 (Ofar HaGiv'ah Mall)

Pizza Concept - Yoni Netanyahu St 29 (Ofar HaGiv'ah Mall)

Pizza Time - David Ben Gurion St 20



Ice Cream

Mamamia Gelato - Sderot Menachem Begin 30 (Amy Mall)

Cremerie De L'eclair - Sderot Menachem Begin 38 (Rogovin Mall)

Golda - Ha'arava St 1



WE HOPE WE HELPED!

We look forward to hearing from you and meeting you! We believe strongly here that there is no such things as strangers - just friends and family who have yet to meet. Make us part of yours - join our groups & keep in touch! Wishing you a **י"ש טוב** - much success and happiness settling into this most special and vibrant city and community!

We can't wait to meet you!

The JLIC Mizrahi Professional Team and Communal Leadership



**Stay in touch with JLIC Givat Shmuel!
Join our Whatsapp community for all relevant groups:**

- **Whatsapp Community -**



- **Main Group -**



and so much more!



Follow us! @jlic.givash.biu

CHECK OUT ALL OF OUR JLIC ISRAEL COMMUNITIES!



Herzliya / Reichman

Tel Aviv University



Technion



Ariel University



Tel Aviv City



Jerusalem



JCT-Tal



Givat Shmuel / Bar Ilan University



Ben Gurion University



JCT-Lev



