



# Welcome to **JLEM**

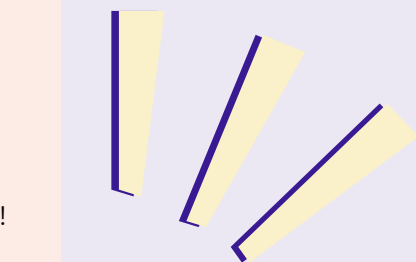
Everything you need to know!

**JLIC Jerusalem**

# WELCOME!

Welcome! We are thrilled that you are joining our vibrant JLIC community in Jerusalem. This welcome packet is designed to help you access some of the essential information you may need to settle into your new home. Whether you are a young professional, student, lone soldier, or new oleh/olah, we've got you covered!

We're so excited to have you in the neighborhood and can't wait to welcome you to our corner of the city!



# WHAT IS JLIC?

**JLIC's** mission is to create a movement of vibrant Jewish life among emerging adults aged 20 to 32 through transformative leadership development, innovative educational programming, and meaningful engagement opportunities. We empower the next generation of leaders who will inspire and strengthen the Jewish community worldwide.

**JLIC Jerusalem** is an intentional community for Anglos in the Jerusalem area. Our goal is to make the big city feel small and help individuals feel like they have a home. We strive to create a caring and warm environment where everyone feels seen, heard, and noticed. We offer weekly Torah learning, Shabbat Tefillah + Kiddush, and social programs run in partnership with community members. In the short time that JLIC JLEM has existed, we've established a new minyan, fostered dozens of friendships and connections, and built up a framework where community members feel truly at home.

## WHAT WE OFFER

### Community

Above all, what JLIC provides is a vibrant and active community; friends and peers with whom to share celebrations and challenges, milestones, holidays and Jewish life, especially for those far away from home.

Under the leadership of a rabbinic couple and a dynamic tzevet of volunteers, JLIC JLEM runs weekly programming, including tefilla, Torah learning opportunities, a spirited Shabbat atmosphere and social events. Hundreds of individuals see the community as central to their lives as they are building a home in Israel or living far away from home.

"JLIC has enhanced my Aliyah experience, providing a warm and welcoming sense of community. It's a place where I've made meaningful friendships and connected with a diverse group of people with shared experiences, smoothing the transition and making it more fun!"  
Hedva Engle



## Tefilla

Our Shabbat minyan meets weekly in the Baka/Katamon area. At this time we offer a weekly Shabbat day minyan with singing, divrei torah from community members and a full kiddush fully run by volunteers. At this time, JLIC JLEM does not yet offer a weekday minyan.

## Shabbat



In addition to our shabbat minyan, JLIC JLEM offers Shabbat meal matching twice a month. We also offer last minute meals for soldiers and miluimnikim coming off of base. Our warm community and rabbinic couple are always able to help with meal placements, even if we don't know you yet! We also offer a bi-monthly oneg in the winter, and a monthly Seudah Shlishit in the summer.

## Chagim

JLIC JLEM always celebrates the chagim together! You can join us for holiday meals, davening, learning and more. We also offer helpful pre-chagim Halacha learning and guides.



## Torah learning

We provide a weekly Beit Midrash program featuring chaburot by community members and chevruta learning. We also offer a weekly Parsha shiur, a monthly Thursday night mishmar, community chevruta matching + siyum making, in addition to other learning.



## Volunteer Opportunities

JLIC runs ongoing volunteer opportunities such as community farming, visiting old age homes, as well as a community bikur cholim, soup for the sick in the winter, support for soldiers, and so much more!



## Social Opportunities

From challah bakes to farbrengens, to hikes, museum trips, yoga, trivia nights, game nights, pizza tastings, and much more, we're committed to offering informal gatherings where community members can schmooze, meet new friends, and just hang out!



JLIC Jerusalem has contributed a lot to my Aliyah experience! It provides a warm and vibrant community of young English speakers in Baka, a useful stepping stone into this overwhelmingly large city and otherwise Hebrew-speaking area. I also love the Torah environment, offering a beit midrash program and multiple shiurim each week, all within the welcoming English-speaking environment and headed by the incredible JLIC JLEM couple, who have both become big role models of mine. If you're unsure about making Aliyah and moving to the holiest city in the world,

JLIC Jerusalem makes the move a lot easier!

- Moshe Inger

# MEET THE LEADERSHIP!

## Rav Jeremy Tibbetts & Emily Zimmer Tibbetts

Directors, JLIC JLEM

Rav Jeremy: 058-7782749 | Emily: 058-7782750

### Rav Jeremy Tibbetts

Originally from the Boston area, Rav Jeremy Tibbetts is the Co-Director of JLIC Jerusalem, as well as the Director of Education for Yavneh, JLIC's intercampus leadership movement for Orthodox college students. Jeremy studied Public Health at the University of Massachusetts, Amherst, received Semicha through Mizrahi's Musmachim program under the auspices of HaRav Yosef Zvi Rimon, and is currently a candidate for a Masters at Hebrew University in Jewish Thought. He has worked in the past as a camp counselor, Hebrew school teacher, and consultant for a variety of nonprofits. He has published writings in outlets such as Hevria and the Lehrhaus. Jeremy lives with his wife Emily, their sons Yedidyah and Betzalel, and their dog Rosie in Baka, Jerusalem, where he loves to study mysticism, play tennis, and write. He is always in the mood for a seltzer.



### Emily Zimmer Tibbetts

Originally from small town Ontario and more recently, Rockland County, NY, Emily Zimmer Tibbetts is the Co-Director of JLIC Jerusalem. Emily is a writer, musician, and Torah educator. Since receiving her BA in Psychology and English from Queens College, Emily has served the Jewish community through roles at UJA-Federation of New York and ORA, the Organization for the Resolution of Agunot. Emily is currently pursuing a master's degree in English literature and non-fiction writing at Bar Ilan University. She loves coffee, nature walks, niggunim, folktales, and hosting Shabbos meals.



# MEET THE LEADERSHIP!

## Eytan Labe & Hannah Midzuk-Labe

Community Program Coordinators, JLIC JLEM

Eytan Labe: 058-4907068 | Hannah Labe 058-7532201

**Eytan** is from Cape Town, South Africa. He studied Business Science Finance with Accounting. His true passion has always been in Jewish education. He has spent the last few years deeply involved with Bnei Akiva, Diller Teen Fellows, and informal education at Jewish schools. He's a big fan of the beach: he loves playing frisbee, beach bats, and having a swim in the sea.

**Hannah** is from Johannesburg, South Africa. While completing her Masters degree in Neuroscience, Hannah worked as a Torah educator in Jewish High Schools in Cape Town, camp counsellor and as a podcaster for a mental health app. In her spare time, Hannah loves dancing, adventuring, reading on the beach and having chavrutot with her friends.



## Kira Hoffer

Bat Sherut, JLIC JLEM

**Kira Hoffer** grew up in the small town of Springfield New Jersey. At the young age of 12 she competed on the first season of the TV show American Ninja Warrior Jr. She went to Frisch for high school where she played on multiple sports teams. During her gap year she went to Sha'alvim for Women which helped her find her way to staying in Israel. She has three younger sisters which she is very close to. In her free time she likes to spend time with her friends, play sports, read, and explore the holy land of Israel. She is excited to be serving as a Bat Sherut with JLIC Jerusalem during the 2025-2026 year.



# ABOUT SOUTH JERUSALEM

At this time, JLIC JLEM folks are based in the neighborhoods of Baka, Katamon, Talpiyot, and sometimes Talbiya and Rechavia. Most find themselves in the Baka/Katamon area. Baka (or Baq'a) is a beautiful, green neighborhood located in the South West of Jerusalem. Whilst Baka is mainly residential, it is fantastically well-located in terms of local amenities, being within a short walk/drive to many local points of interest.

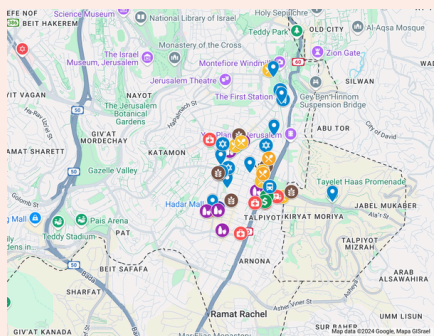


To the West; the “Rakevet” (see below) and the German Colony’s Emek Refaim Street with its shops & restaurants. The North; The First Station and Yes Planet (cinema complex), to the East the trendy shops and cafes that line Derech Beit Lechem and finally to the south, the shops and supermarkets of Talpiot. The streets of Baka are named for the twelve tribes, plus a sprinkling of other Biblical figures that managed to sneak in (Shimshon, Gidon and Boaz). (Capital website)

Nearby attractions include the First Station (a complex of restaurants, cafes and shops), the Park HaMesila (the former train track, now converted to a great park with many food trucks), The Jerusalem Theatre, not to mention the close proximity to the Old City (30-40 min walk or free shuttle bus from the First Station).

## Neighborhood Map

Click on the map below or scan the QR code to use our JLIC JLEM Community Map. You can use this map to discover local bakeries, grocery stores, kupot cholim, banks, and more.



# FINDING A PLACE TO LIVE

## ➔ Where do I look for apartments if I'm trying to create a "new" one?

The Hebrew websites yad2.co.il and Komo.co.il are useful for finding apartments to rent. Search "apartments for rent Jerusalem" or in Hebrew דירות להשכרה ירושלים on Facebook to see groups where landlords and brokers regularly post apartment openings.

## ➔ When should I start looking for an apartment/roommates?

Around 2 months before your desired entry date. That's usually when existing apartments begin searching for a new roommate to fill an empty room and landlords start looking for new tenants. "[Jerusalem Frum Roommates](#)" is a good WhatsApp group to join to seek out roommates in the Greater Baka Community (this group is not specific to JLIC).



### Other things to keep in mind:

- Location (proximity to shopping, buses, shuls - Ramban & Nitzanim)
- Floor - is there an elevator?
- Safety - is there a safe room in the apartment or is there one for the building?
- Amenities - Does the apartment come with furniture, appliances and/or A/C units?
- Storage - some apartment buildings allow the tenants to store things in the basement; most don't especially since the space is primarily a bomb shelter.
- Size of living room if you like to host.

# RESTAURANTS & SHOPPING

## Dairy restaurants



**Kumkum** - Tea place with pastries and sandwiches

**Grand Cafe** - Sit down place with breakfast, pasta, etc.)

**Caffit** - Similar but more selection American Pie Pizza

**Aroma** - Starbucks of Israel with more food

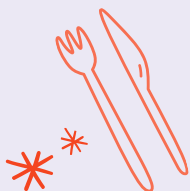
**Casa Lavi** - Mexican-style cafe with food

**Tmol Shilshom** - Really cute Israeli cafe w/shakshuka)

**Cafe Rimon** - All kinds of great stuff



## Meat and Pareve restaurants



**Sushi Rechavia** - Chinese/sushi

**Burgers Bar** - Build-A-Bear for burgers

**Bruno** - Great meat sandwiches

**New Deli** - Cheap deli-style food

**Bresaola** - Great meat sandwiches near us

**Doron Falafel** - Falafel and shawarma

**Tahini's Hummus** - You've never eaten hummus like this

**Aricha Sabich** - Best sabich around

## Shopping

**Makolets** - There are makolets on Derech Beit Lechem and Emek Refaim (and a 24 hour gas station called Paz Baka)

**Supermarkets** - A place next to Bruno and Super Zol are nearby. Or order online from Rami Levy for delivery (need to be in Israel for this to work).

**Delivery** - Wolt is a delivery app here. Almost everywhere speaks English. If you call, some places do their own delivery or will arrange pick up





## WE HOPE WE HELPED!

Wishing you a יישוב טוב - much success and happiness settling into this most special and vibrant city and community!

We can't wait to meet you!

Rav Jeremy, Emily, and the JLIC JLEM community

Stay in touch with JLIC JLEM!



**Join our WhatsApp groups!**

**Jewish Life in the City - JLIC JLEM -**

<https://chat.whatsapp.com/CilbyYd0JWRFwEgVYX0LhI>

**JLIC JLEM Shabbat Meals**

<https://chat.whatsapp.com/BE5WPTnNIXn0WXNqmCMII2>



**Follow us! @jlicjerusalem**

# CHECK OUT ALL OF OUR JLIC ISRAEL COMMUNITIES!

